



2020-2021 WINTER TYRE CATALOGUE

PASSENGER CAR & SUV VAN LIGHT TRUCK



CONTENTS

PRODUCT OVERVIEW	02
WINTER TYRES	03
Passenger Car & Suv	
Van	
Light Truck	
SPECIFICATIONS	15



PRODUCT OVERVIEW



EW66



EW62



**ICE TOUR
i3**



**ICE TOUR
i5**



**WINTERPRO
EW616**



WINTER



Specially designed for passenger cars and SUV /4x4s, provides high level handling and safety in winter conditions.



EW66



EW62

EW66



S/T/H/V Rated
35/40/45/50/55/60/65 Series

Silica compound for excellent driving performance on ice & snow surfaces. Asymmetric pattern and wide tread for outstanding safety.

Ultra Winter Traction



Special winter tread maintains softness in low temperature, ensures stable driving and braking forces.



White Carbon Black Filler



Carbon Black Filler

Silica Compound Technology improves tyre grip and offers lower rolling resistance for more efficient tread wear.

Winter Braking

Deep and densely distributed grooves and steel sheet help soften the tread, contribute to shorter braking distance on the ice-covered surface.



Excellent Handling

Asymmetric pattern featured by three main grooves provides super maneuverability.





WINTER STUDDABLE



Studdable winter tyre designed for passenger cars, SUV /4X4s and light trucks, enhances driving safety and performance on ice and snow.



ICE TOUR
i5



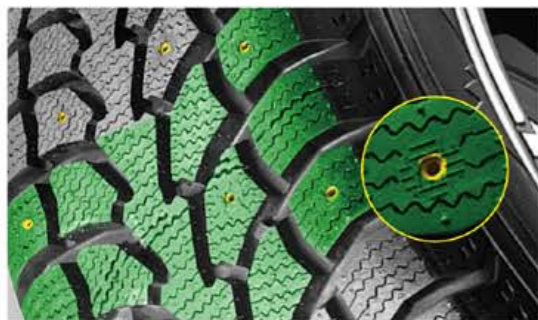
ICE TOUR
i3

ICE TOUR i5



T/H/S/Q/R Rated
40/45/50/55/60/65/70/75/80 Series

Studdable and V-shaped tread design enhances driving safety and performance in extreme winter weather conditions.



Studdable Tread Design

Enhances driving safety and performance in extreme winter weather conditions.



Ultra Winter Traction

Studded-line and pins arrayed randomly contribute to the high grip force, improve resistance to sideslip on snow & ice ground.



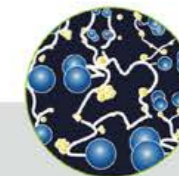
V-shaped Tread Design

Improved grip on ice and snow, skid resistance, effectively reduces noise emissions.



Braking

Wide longitudinal main grooves serrated design in the central groove assures excellent braking performance on ice & snow-covered surface contributes to efficient drainage.



Silica Compound

Reduces rolling resistance, carbon emission and fuel consumption.





WINTER



Exclusively designed winter tyre for commercial VANs, provides higher loading capacity and longer mileage.



WINTERPRO
EW616

WINTERPRO EW616



R/S/T Rated
60/65/70/75 Series

Advanced pattern and durable carcass design, ensure you get through the harshest winter conditions.

Winter Handling

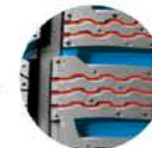
- Circumferential winding pattern grooves provide excellent drainage of snow and water to increase control in winter conditions.



- Tread formula compounds ensure the tyre maintain elasticity and softness in extreme cold weather conditions.

Winter Grip

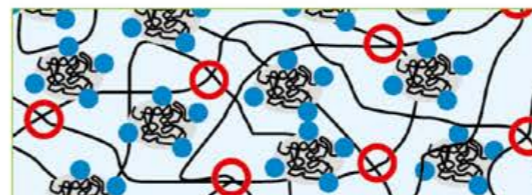
- Specialized tread formula for icy and snowy weather. The tyre with precisely-cut sipes brings stronger grip while driving and effectively reduces fuel cost.



Braking



- Intersecting blocks, grooves and sipes ensure greater control and braking while driving on ice.



Long Mileage Driving

Tread formula compounds improves hydroplaning resistance, lowers rolling resistance, extends the tyre life and mileage.



WINTER TYRES



EW66



S/T/N/V Rated
35/40/45/50/55/60/65 Series



Inch	Size	LI	Note	SI					
14"	185/60R14	82		T	E	C	72dB		
15"	195/65R15	95	XL	T	E	C	72dB		
16"	205/55R16	91		H	E	C	72dB		
	215/55R16	97	XL	H	E	C	72dB		
	215/60R16	99	XL	H	E	C	72dB		
	215/65R16	98		H	E	C	72dB		
	225/55R16	99	XL	H	E	C	72dB		
17"	205/45R17	88	XL	H	E	C	74dB		
	205/50R17	89		H	E	C	74dB		
	205/55R17	95	XL	H	E	C	72dB		
	215/45R17	87		H	E	C	74dB		
	215/55R17	94		H	E	C	72dB		
	225/45R17	91		H	E	C	74dB		
	225/50R17	98	XL	H	E	C	74dB		
	225/55R17	97		H	E	C	72dB		
	225/65R17	102		S	E	C	72dB		
	235/45R17	94		H	E	C	75dB		
	235/55R17	99		H	E	C	72dB		
	235/65R17	104		S	E	C	72dB		
	265/65R17	112		S	C	C	72dB		

Inch	Size	LI	Note	SI					
18"	215/55R18	99	XL	H	E	C	72dB		
	225/40R18	92	XL	H	E	C	74dB		
	235/40R18	95	XL	V	E	C	72dB		
	235/45R18	98	XL	H	E	C	72dB		
	235/55R18	104	XL	H	E	C	72dB		
	245/40R18	97	XL	H	E	C	72dB		
	245/45R18	100	XL	H	E	C	72dB		
	255/55R18	109	XL	H	C	C	72dB		
19"	225/40R19	93	XL	V	E	C	72dB		
	245/40R19	98	XL	H	E	C	72dB		
	255/35R19	96	XL	H	E	C	72dB		
	255/40R19	100	XL	V	E	C	72dB		
	255/50R19	107	XL	H	C	C	75dB		

WINTER TYRES



EW62



T/H Rated
4S/5Q/5S/6Q/6S/7Q Series



Inch	Size	LI	Note	SI			
13"	155/65R13	73		T	E	E	71dB
	155/70R13	75		T	E	E	71dB
	165/70R13	83	XL	T	E	E	71dB
	175/70R13	82		T	E	E	71dB
	165/65R14	79		T	E	E	71dB
14"	165/70R14	85	XL	T	E	E	71dB
	175/65R14	82		H	E	E	71dB
	175/70R14	88	XL	T	E	E	71dB
	185/60R14	82		T	E	E	71dB
	185/65R14	86		T	E	E	71dB
	185/70R14	88		H	E	E	71dB
	195/60R14	86		T	E	C	71dB
	195/70R14	91		H	E	C	71dB
	205/70R14	98	XL	T	E	C	71dB
	15"	175/65R15	84		H	E	E
185/55R15		86	XL	H	E	E	71dB
185/60R15		88	XL	H	E	E	71dB
185/65R15		88		T	E	E	71dB
185/65R15		92	XL	T	E	E	71dB
195/50R15		86	XL	H	E	C	71dB
195/55R15		85		H	E	C	71dB
195/60R15		88		T	E	C	71dB
195/65R15		91		T	E	C	71dB
205/60R15		91		H	E	C	71dB
205/65R15		94		H	E	C	71dB
215/65R15	96		H	E	C	72dB	

Inch	Size	LI	Note	SI			
16"	195/45R16	84	XL	H	E	C	73dB
	195/55R16	87		H	E	C	71dB
	205/45R16	87	XL	H	E	C	73dB
	205/50R16	87		H	E	C	71dB
	205/55R16	91		H	E	C	71dB
	205/55R16	94	XL	H	E	C	71dB
	205/60R16	96	XL	H	E	C	71dB
	205/65R16	95		H	E	C	71dB
	215/55R16	97	XL	H	E	C	72dB
	215/60R16	99	XL	H	E	C	72dB
	215/65R16	98		H	E	C	72dB
	225/55R16	99	XL	H	E	C	72dB
	225/60R16	98		H	E	C	72dB

WINTER TYRES



ICE TOUR i5



T/H/S/Q/R Rated
40/45/50/55/60/65/70/75/80 Series



Inch	Size	LI	Note	SI					
13"	155/80R13	79		T	F	E			71dB
	175/70R13	82		T	F	E			71dB
14"	175/65R14	82		T	F	E			71dB
	175/70R14	84		T	F	E			71dB
	185/60R14	82		T	F	E			71dB
	185/65R14	86		T	E	E			71dB
15"	185/70R14	88		T	E	E			71dB
	175/65R15	84		T	F	E			71dB
	185/55R15	82		T	F	E			71dB
	185/60R15	84		T	F	E			71dB
	185/65R15	88		T	E	E			71dB
	195/60R15	88		T	E	E			72dB
	195/65R15	91		T	E	E			72dB
	205/65R15	94		T	E	E			72dB
	205/70R15	96		T	E	E			72dB
	215/70R15	98		T	E	E			72dB
	235/75R15	105		S	E	E			72dB
	16"	205/55R16	91		T	E	E		
205/60R16		92		T	E	E			72dB
205/65R16		95		T	E	E			72dB
215/55R16		97	XL	H	E	E			72dB
215/60R16		95		T	E	E			72dB
215/65R16		98		T	E	E			72dB
215/70R16		100		S	E	E			72dB
225/60R16		98		T	E	E			72dB
225/65R16		100		T	E	E			72dB
225/70R16		103		S	E	E			72dB
16"	LT225/75R16 10PR	115/112		Q	E	E			73dB
	235/70R16	106		S	E	E			72dB
	245/70R16	107		S	E	E			72dB
	245/75R16	111		S	E	E			72dB
	LT245/75R16 10PR	120/116		Q	E	E			73dB

Inch	Size	LI	Note	SI						
17"	215/45R17	91	XL	T	E	E			72dB	
	215/50R17	95	XL	T	E	E			72dB	
	215/55R17	94		T	E	E			72dB	
	215/60R17	96		T	E	E			72dB	
	215/65R17	99		T	E	E			72dB	
	225/45R17	94	XL	H	E	E			72dB	
	225/50R17	98	XL	H	E	E			72dB	
	225/55R17	97		T	E	E			72dB	
	225/60R17	99		T	E	E			72dB	
	225/65R17	102		S	E	E			72dB	
	235/55R17	99		H	E	E			72dB	
	235/60R17	102		H	E	E			72dB	
	235/65R17	104		S	E	E			72dB	
	245/65R17	107		S	E	E			72dB	
	245/70R17	110		S	E	E			72dB	
	LT245/70R17 10PR	119/116		Q	E	E			73dB	
	LT245/75R17 10PR	121/118		R	E	E			73dB	
18"	265/65R17	112		T	E	E			73dB	
	265/70R17	115		S	E	E			73dB	
	LT265/70R17 10PR	121/118		Q	E	E			73dB	
	225/40R18	92	XL	H	E	E			72dB	
	225/45R18	95	XL	T	E	E			72dB	
	225/55R18	98		T	E	E			72dB	
	225/60R18	100		T	E	E			72dB	
	235/55R18	100		H	E	E			72dB	
	235/60R18	107	XL	T	E	E			72dB	
	235/65R18	106		T	E	E			72dB	
	245/60R18	105		T	E	E			72dB	
	19"	255/55R18	105		H	E	E			72dB
265/60R18		110		T	E	E			73dB	
275/65R18		116		S	E	E			73dB	
235/55R19		101		H	E	E			72dB	
255/50R19		107	XL	H	E	E			72dB	
20"		275/40R20	106	XL	H	E	E			73dB
		275/55R20	117	XL	S	E	E			73dB

WINTER TYRES



ICE TOUR i3



T Rated
55/65 Series



Inch	Size	LI	Note	SI				
14"	175/65R14	82		T				
15"	195/65R15	91		T				
16"	205/55R16	94	XL	T				
	215/65R16	98		T				

WINTERPRO EW616

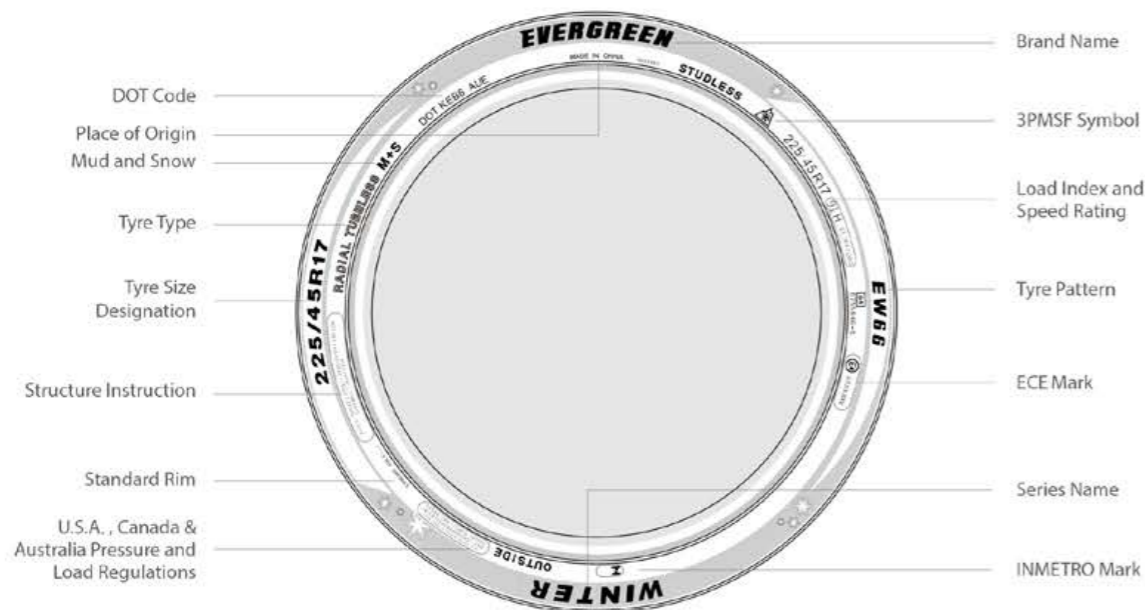


R/S/T Rated
60/65/70/75 Series

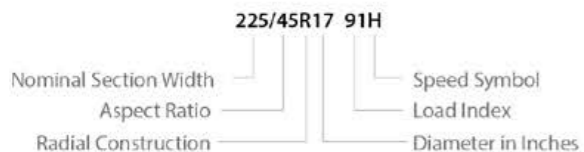


Inch	Size	LI	SI				
14"	185R14C	102/100	R	E	E	71dB	
	195R14C	106/104	R	E	E	71dB	
15"	195/70R15C	104/102	S	E	E	71dB	
	215/70R15C	113/111	S	C	E	71dB	
	225/70R15C	112/110	S	C	E	71dB	
	185/75R16C	104/102	R	E	E	71dB	
16"	195/60R16C	99/97	T	C	E	71dB	
	195/65R16C	104/102	T	E	E	71dB	
	195/75R16C	107/105	R	E	E	71dB	
	205/65R16C	107/105	T	E	E	71dB	
	205/75R16C	113/111	R	C	E	71dB	
	215/60R16C	108/106	T	E	E	71dB	
	215/65R16C	109/107	T	E	E	71dB	
	215/75R16C	116/114	R	C	E	71dB	
	225/65R16C	112/110	T	C	E	71dB	
	225/75R16C	118/116	R	C	E	71dB	
235/65R16C	115/113	R	C	E	71dB		

READING YOUR TIRES



TYRE SIZE: a combination of alphabetic and numeric characters that indicate the nominal dimensions of a tyre.



OTHER MARKINGS

ZR Indicates the tyres having a maximum speed capability above 240km/h.

LT Indicates the tyres are intended for light truck vehicles.

XL Indicates the tyres can carry more load as the maximum inflation pressure and load are greater than a standard load version.

SPEED RATING

The speed symbol refers to the maximum speed capabilities of the tyre. It is only valid for tyres that are properly inflated and loaded within their assigned load index.

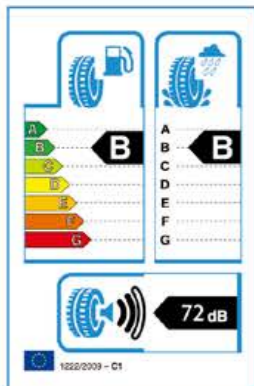
Speed Rating	L	N	P	Q	R	S	T	U	H	V	W	Y	ZR
Max. Kph. (kilometer/hour)	120	140	150	160	170	180	190	200	210	240	270	300	≥240

LOAD INDEX

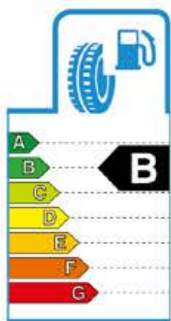
The load index is the maximum load-carrying of a tyre under a specific condition.

Load Index	KG	LBS	Load Index	KG	LBS	Load Index	KG	LBS	Load Index	KG	LBS	Load Index	KG	LBS
50	190	420	70	335	740	90	600	1320	110	1060	2340	130	1900	4180
51	195	430	71	345	760	91	615	1360	111	1090	2400	131	1950	4300
52	200	440	72	355	785	92	630	1390	112	1120	2470	132	2000	4400
53	206	455	73	365	805	93	650	1430	113	1150	2540	133	2060	4540
54	212	465	74	375	825	94	670	1480	114	1180	2600	134	2120	4680
55	218	480	75	387	855	95	690	1520	115	1215	2680	135	2180	4800
56	224	495	76	400	880	96	710	1570	116	1250	2760	136	2240	4940
57	230	505	77	412	910	97	730	1610	117	1285	2830	137	2300	5080
58	236	520	78	425	935	98	750	1650	118	1320	2910	138	2360	5200
59	243	535	79	437	965	99	775	1710	119	1360	3000	139	2430	5360
60	250	550	80	450	990	100	800	1760	120	1400	3080	140	2500	5520
61	257	565	81	462	1020	101	825	1820	121	1450	3200	141	2575	5680
62	265	585	82	475	1050	102	850	1870	122	1500	3300	142	2650	5840
63	272	600	83	487	1070	103	875	1930	123	1550	3420	143	2725	6000
64	280	615	84	500	1100	104	900	1980	124	1600	3520	144	2800	6150
65	290	640	85	515	1140	105	925	2040	125	1650	3640	145	2900	6400
66	300	660	86	530	1170	106	950	2090	126	1700	3740	146	3000	6600
67	307	675	87	545	1200	107	975	2150	127	1750	3860	147	3075	6800
68	315	695	88	560	1230	108	1000	2200	128	1800	3960	148	3150	6950
69	325	715	89	580	1280	109	1030	2270	129	1850	4080	149	3250	7150

THE EU TYRE LABEL



- As from 1 November 2012, manufacturers and importers of tyres have the obligation to accompany all tyres produced after 1 July 2012 with stickers, labels and technical promotional material. Distributors (e.g. tyre dealers, repair shops, car retailers) have the obligation to make this information available at the point of sale in a clearly visible position.
- The label provides information on fuel efficiency, wet grip and external rolling noise through clear pictograms. The label will allow consumers to make informed choices when buying tyres, ranked on a scale from A (best) to G (bad).
- The Regulation (EC) No 1222/2009 on the labelling of tyres aims to provide end-users of vehicles with clear and relevant information about the quality of the tyre, and to guide them towards choosing a product which is more fuel efficient, has better wet braking and is less noisy.



1 Fuel Efficiency / Rolling Resistance

- When a tyre is rolling it deforms and energy is dispersed. The energy that is lost is called rolling resistance and this has an effect on fuel consumption and also the environment. The lower the rolling resistance the less energy and less fuel the tyre uses.
- The difference between an A rating and a G rating could mean a reduction in fuel consumption of up to 7.5%. To put this in real terms, choosing A-rated tyres instead of G-rated tyres could save you more than 6 liters of fuel every 1000 kilometers.

*Rating D is not used for passenger cars.



2 Wet Grip / Braking Performance




- The better your wet grip the shorter your braking distance on wet and slippery roads, keeping you safe in the rain.
- The rating you will see on the EU tyre label is measured from the braking distance at 50mph in wet conditions. The difference between class G and A for a full set of tyres can be a 30% shorter braking distance. For example for a car driving 80 km/h, this may represent a shorter braking distance of 18m.

*Ratings D and G are not used for passenger cars.



3 Noise Emission / Exterior Noise

- The exterior noise of a tyre is expressed in decibels (dB) and this is shown by 1, 2 or 3 waves on the EU tyre label.
- Decibel levels are measured on a logarithmic scale. This means that an increase of just a few decibels represents a big difference in noise levels. In fact, a difference of 3dB doubles the amount of external noise the tyre produces.

-  1 black wave: low noise tyre (3dB or more below the future European limit)
-  2 black waves: average tyre (between the future European limit and 3dB below)
-  3 black waves: noisier tyre (above the future European limit)

*The new European tyre external noise levels will be introduced by 2016.

EVERGREEN TIRE
Global Sales Division (Shanghai)

Add: Room 803, Building No. 5, Lane 388 Daduhe Road, Shanghai 200062, China

Tel: (+86) (21) 6295 5670

Fax: (+86) (21) 6295 3003

E-mail: evergreentyre@evergreentyre.com

www.evergreentyre.com